

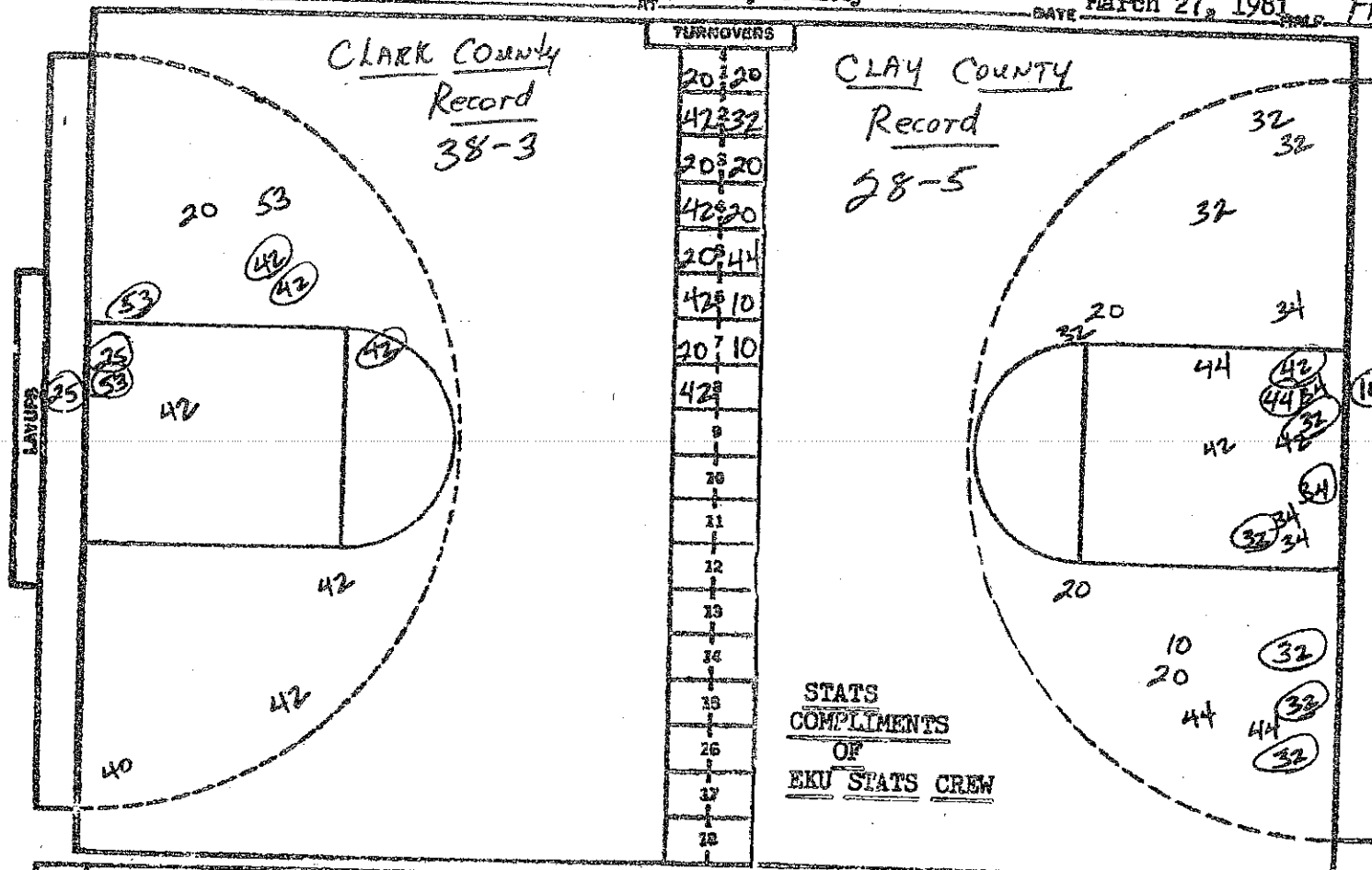
CAGE CHART

Clark County

Clay County

DATE March 27, 1981

F



NO.	CLARK	FG-FGA	FT-FTA	RD	P	TP	A
20	Cindi Clay	4-6	1-3	1	1	9	2
42	Sally Malley	8-17	9-11	2	2	25	4
25	Velma Jordan	3-5	1-2	14	2	7	0
53	Celia Cooper	3-7	2-3	2	1	8	0
40	Sharon Martin	1-4	0-0	6	3	2	1
45	Seleta Rose	-	DNP				
33	Jeanne Kirk	-	DNP				
34	Sherri Snapp	-	DNP				
23	Lisa Collins	-	DNP				
32	Kandi Proffitt	-	DNP				
43	Daphne Harmon	-	DNP				
		-	-				
		-	-				
		-	-	2	D.B.		
TOTALS		19-39	13-19	27	9	51	7

NO.	CLAY	FG-FGA	FT-FTA	RD	P	TP	A
20	Regina Gregory	0-5	0-2	0	4	0	6
44	Virgella Combs	5-10	2-3	5	1	12	4
34	Pauletta Lipps	5-10	0-0	10	1	10	0
42	Billie Cornett	3-6	0-1	3	5	6	0
32	Regina Hubbard	8-18	0-0	5	2	16	1
10	Liz Foister	1-4	1-1	1	0	3	0
12	Rhonda Hyde	0-0	0-0	0	2	0	1
40	Lillie Bowman	-	DNP				
27	Carmen Webb	-	DNP				
50	Lolita Hobbs	-	DNP				
11	Patty Lawson	-	DNP				
		-	-				
		-	-				
		-	-	1	D.B.		
TOTALS		22-53	3-7	25	15	47	12

PERCENTS 48.7 68.4 3 TEAM REBOUNDS (NOT IN TOTALS)

PERCENTS 41.5 40.9 6 TEAM REBOUNDS (NOT IN TOTALS)

Qtrs. CLAY Co. 16-10-9-12 = 47
 SCORE BY HALF: 16-10-9-12 = 47
 OFFICIALS: Hobe Dunbin & Phyllis Everly
 ATTENDANCE: 5200 Est.

Clark Co. 19-9-10-13 = 51